

AHI Series: EI Power PCB Transformer [2.5VA,5VA,10VA]

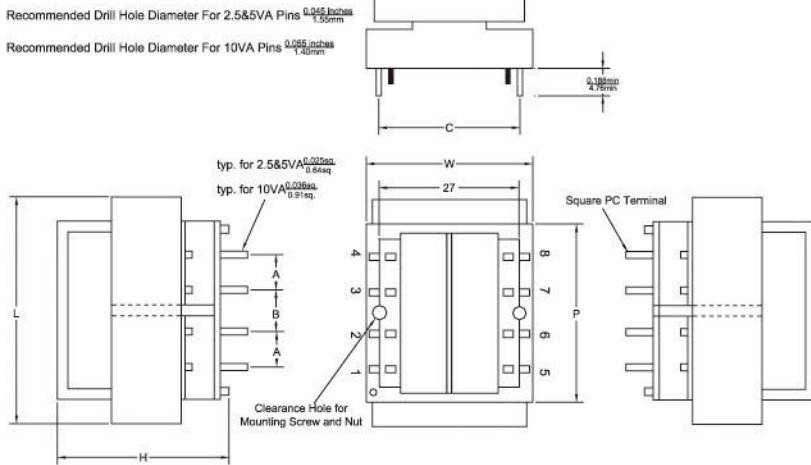
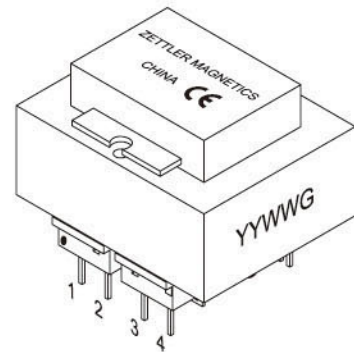


FEATURES

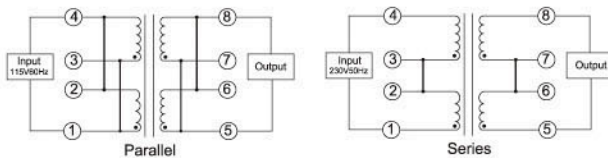
- Conform to IEC EN61558-1 Safety Standards
- UL 1585 Approved Class 2&3: UL File No. E214561
- Dielectric Strength 4200Vrms
- Material Meet UL 94V-O Flammability Requirement
- Splitted Bobbin Wall Slots Eliminates All Wire Crossovers
- 3 Standard Sizes for a Variety of Power Application



OUTLINE DIMENSIONS



Electrical Schematic



Part NO	VA	Rating Output	
		SER	PAR
AHI02510	2.5	10V @ 0.25A	5V @ 0.50A
AHI05010	5.0	10V @ 0.50A	5V @ 1.00A
AHI1010	10.0	10V @ 1.00A	5V @ 2.00A
AHI02512	2.5	12.6V @ 0.20A	6.3V @ 0.40A
AHI05012	5.0	12.6V @ 0.40A	6.3V @ 0.80A
AHI1012	10.0	12.6V @ 0.80A	6.3V @ 1.60A
AHI02516	2.5	16V @ 0.15A	8V @ 0.30A
AHI05016	5.0	16V @ 0.31A	8V @ 0.62A
AHI1016	10.0	16V @ 0.62A	8V @ 1.25A
AHI02520	2.5	20V @ 0.12A	10V @ 0.24A
AHI05020	5.0	20V @ 0.25A	10V @ 0.50A
AHI1020	10.0	20V @ 0.50A	10V @ 1.00A
AHI02524	2.5	24V @ 0.10A	12V @ 0.20A
AHI05024	5.0	24V @ 0.21A	12V @ 0.42A
AHI1024	10.0	24V @ 0.42A	12V @ 0.84A
AHI02528	2.5	28V @ 0.09A	14V @ 0.18A
AHI05028	5.0	28V @ 0.18A	14V @ 0.36A
AHI1028	10.0	28V @ 0.36A	14V @ 0.72A
AHI02536	2.5	36V @ 0.07A	18V @ 0.14A
AHI05036	5.0	36V @ 0.14A	18V @ 0.28A
AHI1036	10.0	36V @ 0.28A	18V @ 0.56A

VA (SIZE)	DIMENSIONS					MTG.DIM.		
	L	W	H	A	B	C	M	WT
2.5	<u>1.634max</u>	<u>1.457max</u>	<u>1.161max</u>	<u>0.200</u>	<u>0.250</u>	<u>1.000</u>	<u>1.06</u>	<u>0.25LBS</u>
	41.5	37	29.5	5.08	6.35	25.4	26.92	0.113KG
5	<u>1.634max</u>	<u>1.457max</u>	<u>1.402max</u>	<u>0.200</u>	<u>0.400</u>	<u>1.000</u>	<u>1.06</u>	<u>0.37LBS</u>
	41.5	37	35.6	5.08	10.16	25.4	26.92	0.168KG
10	<u>1.910max</u>	<u>1.614max</u>	<u>1.437max</u>	<u>0.200</u>	<u>0.400</u>	<u>1.140</u>	<u>1.25</u>	<u>0.53LBS</u>
	48.5	41	36.5	5.08	10.16	29	31.75	0.240KG